

**FRESNO COUNTY COMMITTEE
ON SCHOOL DISTRICT ORGANIZATION**

District 1 Daniel Babshoff Terry L. Cox	District 2 Sandy Bengel-Budd Warren Jennings	District 3 Myra Coble Barbara Thomas	District 4 Louis Mata Dr. Lawrence Wilder	District 5 Gnia Joe Lee Don Fowler	At Large Vacant
---	--	--	---	--	--------------------

BEFORE THE FRESNO COUNTY COMMITTEE ON SCHOOL DISTRICT ORGANIZATION
FRESNO COUNTY, CALIFORNIA

In the Matter of Adopting and Approving an
Adjusted Trustee-Area Map for West Hills
Community College District

RESOLUTION NO. 2022 – 02

WHEREAS, the Fresno County Committee on School District Organization (the “County Committee”) has the authority to adjust the West Hills Community College District (“Community College District”) trustee areas (Education Code § 5019); and

WHEREAS, the Community College District has submitted its proposed Plan 1 via its Resolution in the Matter of Adopting a Plan for Adjustment of Trustee Areas, which adjusts the trustee areas of the Community College District using 2020 decennial federal census data (said resolution and Plan 1 are attached and incorporated as Exhibit “1”); and

WHEREAS, the Community College District avers that: (1) validated 2020 Census data was used by the Community College District’s demographer in creating Plan 1; (2) the proposed trustee areas created by Plan 1 would contain substantially equal populations, as defined by law; and (3) the proposed trustee areas created by Plan 1 would otherwise comply with applicable legal requirements; and

WHEREAS, the County Committee gave public notice for, held, and conducted a public hearing regarding the proposal at its meeting on April 21, 2022 (Education Code § 5019, subd. (c)); and

WHEREAS, the authority of the County Committee to adjust trustee areas in this matter does not extend to modifying the external boundaries of the Community College District’s jurisdiction.


NOW, THEREFORE, BE IT RESOLVED that the County Committee approves the Community College District’s request to adjust its trustee area boundaries as outlined in Plan 1 and its resolution, and the trustee area boundaries depicted shall be the internal trustee area boundaries for the Community College District effective immediately upon the adoption of this Resolution.

To the extent Plan 1 contains any anomalous external boundary lines inconsistent with the actual external boundary lines of the Community College District’s jurisdiction, such clerical or other errors are to be disregarded. By this Resolution the County Committee makes no changes to the external boundaries of the Community College District and only the adjusted trustee area lines are to be adjusted and implemented by this Resolution.

This Resolution is adopted at a duly called meeting of the Fresno County Committee on School District Organization held on April 21, 2022 by the following votes:


Chairperson Wilder	:	Yes <u>X</u>	No <u> </u>	Abstain <u> </u>	Absent <u> </u>
Vice Chairperson Babshoff	:	Yes <u>X</u>	No <u> </u>	Abstain <u> </u>	Absent <u> </u>
Member Bengel-Budd	:	Yes <u> </u>	No <u> </u>	Abstain <u> </u>	Absent <u>X</u>
Member Coble	:	Yes <u>X</u>	No <u> </u>	Abstain <u> </u>	Absent <u> </u>

Member Cox	:	Yes	<u>X</u>	No	___	Abstain	___	Absent	___
Member Fowler	:	Yes	<u>X</u>	No	___	Abstain	___	Absent	___
Member Jennings	:	Yes	<u>X</u>	No	___	Abstain	___	Absent	___
Member Lee	:	Yes	<u>X</u>	No	___	Abstain	___	Absent	___
Member Mata	:	Yes	<u>X</u>	No	___	Abstain	___	Absent	___
Member Thomas	:	Yes	<u>X</u>	No	___	Abstain	___	Absent	___


 Dr. Lawrence Wilder, Chairperson

CERTIFICATION

I am the Ex-Officio Secretary of the Fresno County Committee on School District Organization and hereby certify that the foregoing resolution is the full, true, and correct resolution duly passed and adopted by the Fresno County Committee on School District Organization on the date stated above.

By: 

 Jim A. Yovino, Fresno County Superintendent of Schools
 Ex-Officio Secretary and Executive Officer of the
 Fresno County Board of Education

Date: 4/25/2022

Doc #136901

Exhibit "1" to Resolution No. 2022 – 02



**BEFORE THE GOVERNING BOARD OF THE
WEST HILLS COMMUNITY COLLEGE DISTRICT**

**Resolution in the Matter of
Adopting a Plan for Adjustment of Trustee Areas**

WHEREAS, the West Hills Community College District ("District") currently elects each member of its governing board using "by-trustee area" elections, *i.e.*, elections in which "one member of the governing board shall be elected from each trustee area[,]" and in which "[a] candidate for election as a member of the governing board shall reside in, and be registered to vote in, the trustee area he or she seeks to represent[,]" Cal. Educ. Code § 72036(a); *see also* Educ. Code § 5030(b); and

WHEREAS, the California Education Code requires that in the year following the Census (years ending in "1") a community college district that conducts its elections by-trustee area must adjust the boundaries of those areas to equalize their population in light of the new Census data; and

WHEREAS, at a public meeting on September 28, 2021, the Board of Trustees received a presentation from the District's retained special voting rights counsel and retained demographer regarding the legal and policy criteria governing redistricting; and

WHEREAS, on August 12, 2021, the Census Bureau released the decennial redistricting data, after a four-and-a-half month delay caused by the COVID pandemic; and

WHEREAS, on September 20, 2021, the California Statewide Database released a prisoner-adjusted version of the Census Bureau's data, as required by state law, which have been designated by the Department of Finance as the "validated" data for purposes of community college district redistricting under the Education Code; and

WHEREAS, at a public meeting of the Board of Trustees on October 26, 2021, the District's retained demographer provided the Board and the public with certain demographic information regarding the current trustee areas, based on the adjusted, "validated" 2020 Census data; and

WHEREAS, the Census data indicate that the current trustee areas have a "total deviation" as defined under federal law of 17.2%; and

WHEREAS, a map with a total deviation exceeding 10% is presumptively in excess of the range permitted by the equal protection clause, meaning that the District must adjust the trustee area boundaries to bring them back into substantial equality of population; and

WHEREAS, at the Board's public meeting on October 26, 2021, the Board therefore reviewed and adopted criteria to guide the adjustment of the District's trustee area boundaries based on the 2020 Census data; and

WHEREAS, the District's retained demographer thereafter formulated possible alternative redistricting scenarios for review by the public at a public hearing and for consideration by the Board of Trustees, based on the criteria adopted by the Board at its October 26, 2021 meeting; and

WHEREAS, at a public meeting of the Board of Trustees on November 16, 2021, the District's retained demographer presented a draft map which was developed according to the criteria set forth above, for the consideration of the Board and the public, and was posted to the District's website for public viewing; and

WHEREAS, at a public meeting of the Board on December 14, 2021, the Board invited further testimony from the public regarding mapping and any other information the public wished to be considered regarding the redistricting process; and

WHEREAS, at the public meeting of the Board on January 18, 2022, the District's retained demographer presented the draft map, which has been publicly posted on the District's redistricting website since November 9, 2021, for the consideration of the Board and the public; and

WHEREAS, following the presentation of the District's retained demographer on January 18, the Board solicited any final public testimony regarding the draft plan before the Board voted to adopt a final plan; and

WHEREAS, the Board of Trustees has considered all public comment on this matter; and

WHEREAS, the population in the proposed trustee areas of the draft trustee area plan is substantially equal, as defined by law; and

WHEREAS, the draft trustee area plan complies with the federal Voting Rights Act, and with all applicable laws and regulations set forth in the California Education Code and the California Elections Code; and

WHEREAS, the Board of Trustees chooses the trustee area boundaries in proposed Plan 1 because the Board believes that Plan 1 adheres to the redistricting criteria adopted by the Board of Trustees; and

WHEREAS, California Education Code sections 5019(c) and 5019(d) requires the Fresno County Committee on School District Organization ("County Committee") to review a plan to rearrange the boundaries of trustee areas pursuant to a resolution adopted by the governing board of the district; and

NOW, THEREFORE, the District hereby finds, determines, declares, and resolves as follows:

Section 1. Determination of Recitals. The above recitals are true and correct.

Section 2. Adoption of Plan for Adjustment of the Trustee Areas. The Board of Trustees does hereby adopt Plan 1, attached hereto as Exhibit "A" and incorporated herein by this reference, as the trustee area plan to be submitted as soon as possible to the Fresno County Committee on School District Organization ("County Committee") for its approval for use in the District's elections on November 8, 2022, and thereafter.

Section 3. Board Direction. The Chancellor and/or her designee shall take all actions necessary to notify the County Committee of the Board's determination forthwith and provide whatever assistance may be required by the County Committee, or by the Elections Departments of Fresno, Kings, Madera, Monterey, and/or San Benito Counties, to complete the process in a timely fashion to permit implementation of these trustee areas in connection with the District election to be held on November 8, 2022. Staff, including the District's retained demographer when working with the Registrar(s) of Voters during plan implementation and adjustment of precinct configurations, are authorized to make required technical amendments to the new redistricting plan that do not substantively affect the populations in the districts, the district boundaries, compliance with the Board's redistricting criteria or the intent of this resolution, and shall advise the Board of any such amendments that are found to be required in plan implementation.

Section 4. Delegation of Authority. The Chancellor and/or her designee shall take all actions necessary to provide whatever assistance may be required by County Committee and/or the Elections Departments of Fresno, Kings, Madera, Monterey, and San Benito Counties, and to complete the process in a timely fashion to permit implementation of these trustee areas in connection with the District elections to be held on November 8, 2022.

Section 5. Effective Date. This Resolution shall be effective as of the earliest day possible under the law until otherwise rescinded by the Board.

The foregoing resolution was adopted this 18th day of January, 2022 at a regular meeting of the governing board hereof by the following vote, to-wit:

Board Member Cantu:	<u>X</u>	Yes	___	No	___	Abstain	___	Absent
Board Member Jackson:	<u>X</u>	Yes	___	No	___	Abstain	___	Absent
Board Member Levinson:	<u>X</u>	Yes	___	No	___	Abstain	___	Absent
Board Member Maldonado:	<u>X</u>	Yes	___	No	___	Abstain	___	Absent
Board Member McKean:	<u>X</u>	Yes	___	No	___	Abstain	___	Absent
Board Member Oxborrow:	<u>X</u>	Yes	___	No	___	Abstain	___	Absent
Board Member Raygoza:	<u>X</u>	Yes	___	No	___	Abstain	___	Absent

Dated: 01/18/2022



Mark McKean
President of the Board of Trustees

CERTIFICATION

STATE OF CALIFORNIA)
COUNTY OF FRESNO)

I, the undersigned, hereby certify that this resolution is a true and correct copy of a resolution adopted on the 18th day of January, 2022, at a regular meeting of the Board of Trustees of the West Hills Community College District, and that such resolution appears in the official minutes of the governing board under that date.

Dated: 01/18/2022



Nina Oxborrow
Clerk of the Board of Trustees

**West Hills Community College District
Trustee Area Redistricting 2022**

Exhibit A

Contents:





- Overview map of Plan 1 (adopted 1/18/2022)
- Detail Map of TA 2/TA 6 boundary in Mendota with change from 2011 Trustee Area boundaries (all other Trustee Areas have the same boundaries as in the 2011 Plan)
- Data Table

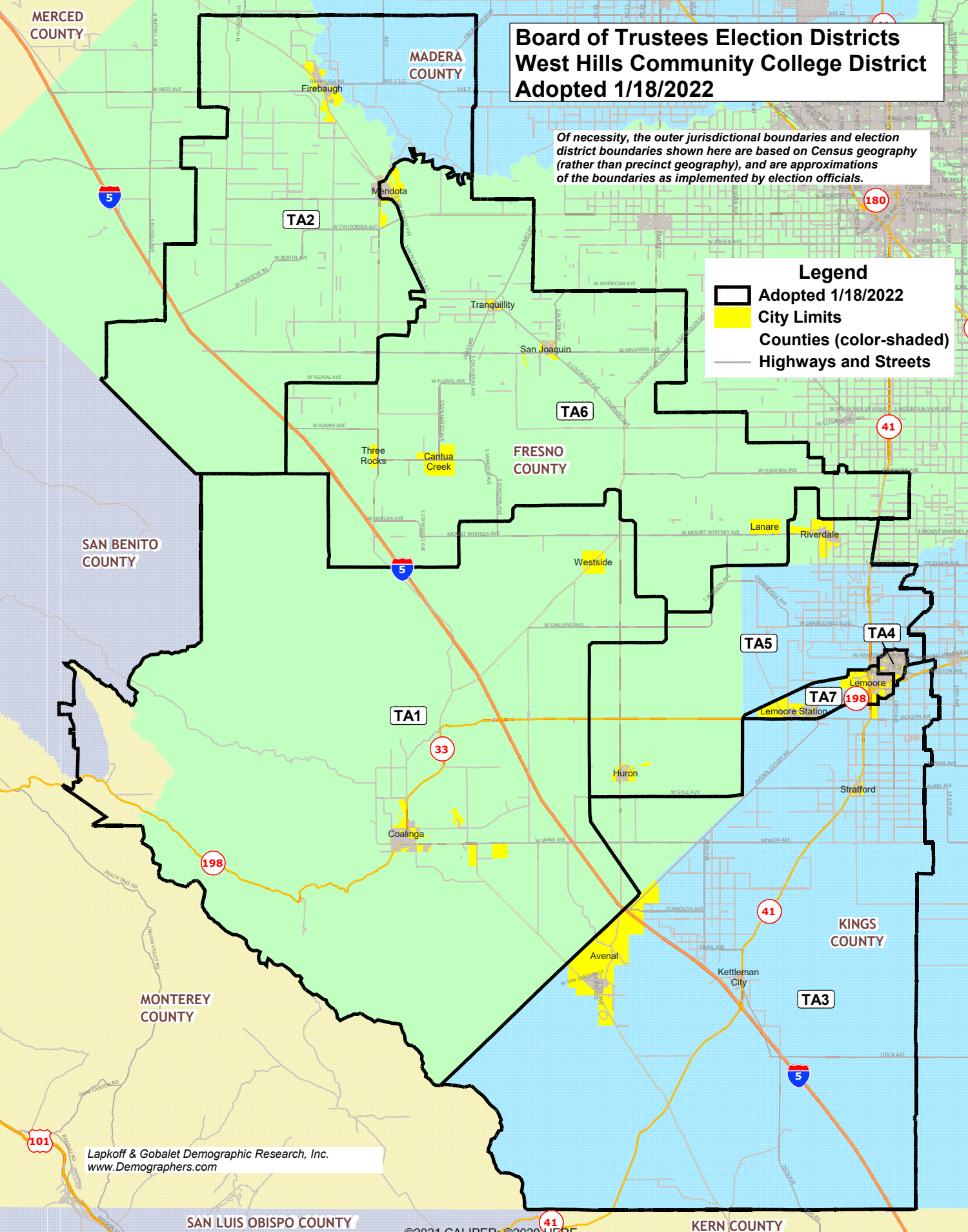
MERCER COUNTY

Board of Trustees Election Districts West Hills Community College District Adopted 1/18/2022

Of necessity, the outer jurisdictional boundaries and election district boundaries shown here are based on Census geography (rather than precinct geography), and are approximations of the boundaries as implemented by election officials.

Legend

-  Adopted 1/18/2022
-  City Limits
-  Counties (color-shaded)
-  Highways and Streets



SAN BENITO COUNTY

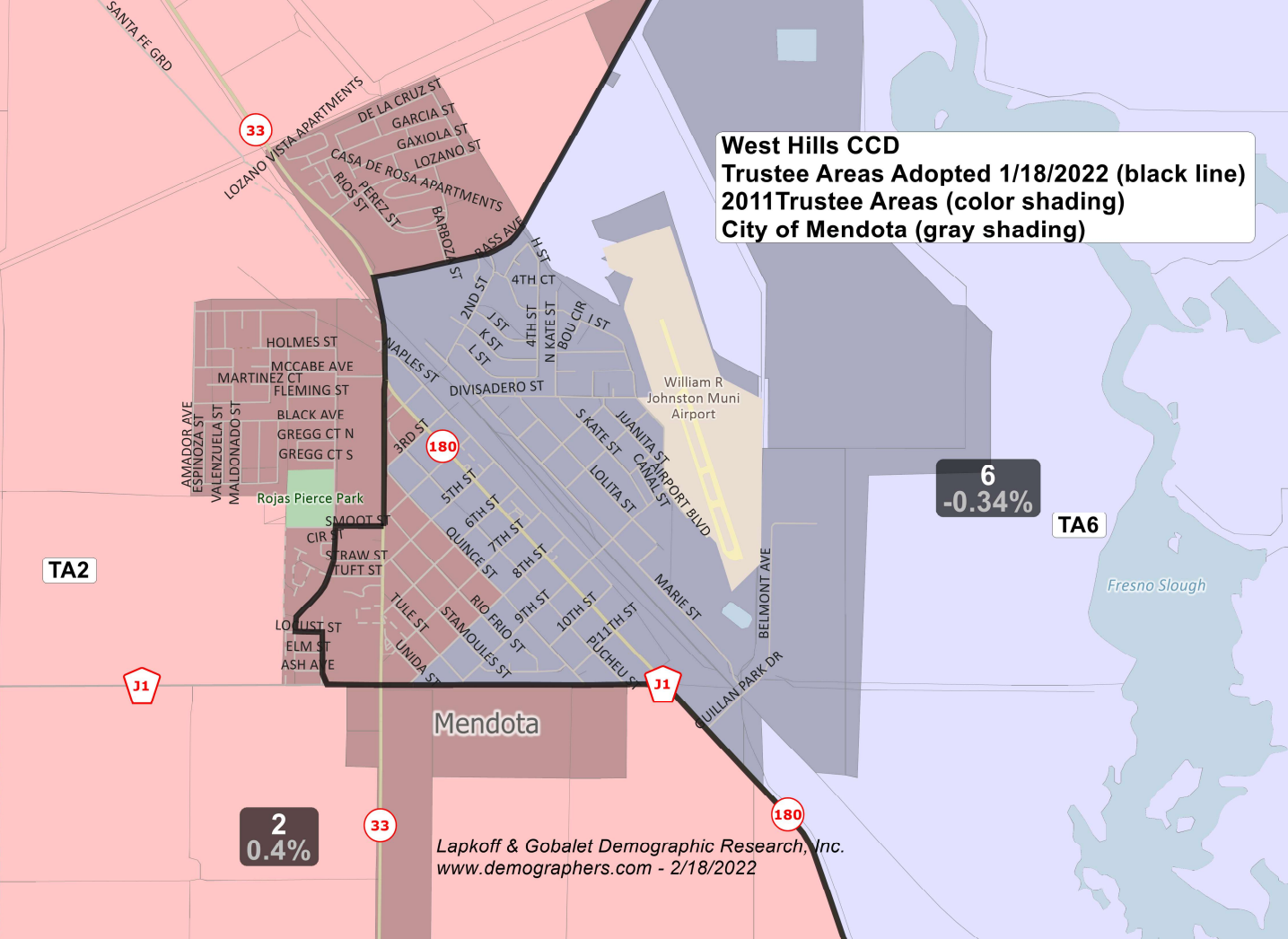
MONTEREY COUNTY

SAN LUIS OBISPO COUNTY

KERN COUNTY

Lapkoff & Gobalet Demographic Research, Inc.
www.Demographers.com

West Hills CCD
Trustee Areas Adopted 1/18/2022 (black line)
2011 Trustee Areas (color shading)
City of Mendota (gray shading)



Lapkoﬀ & Gobalet Demographic Research, Inc.
www.demographers.com - 2/18/2022